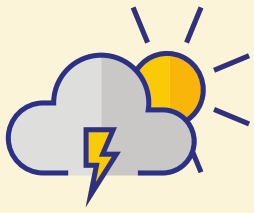


YINTONI UKUTSHINTSHA KWE MOZULU KWAYE KUTHENI KUFUNEKA SIYIHOYILE?

Xa ufuna ulwazi oluphangaleleyo undwendwele u africanclimatealliance.org/resources

UBUSAZI UKUBA IMOZULU KWAKUNYE NEMO YEZULU UKUBA AZIFANI?



**IMOZULU= IIMEKO KULO NDAWO
UKUYO KWAKUNYE NEXESHA.**



**IMO YEZULU = UTSHINTSHO LWE
MOZULU EMVA KWEXESHA.**

umzekelo, iUpington ibonakala inemo yezulu apho kugqatsa ubhobhoyi kwaye omile khona nangoko ineemini apho kubanda khona.

**XA SITHETHA NGOTSHINTSHO LWE MOYEZULU SITHETHA NGOTSHINTSHO OLWENZEKA
EMVA KWEXESHA ELIDE KWIMOZULU, KUMHLABA WONKE. LUSENZIWA ZIZENZO ZABANTU.**

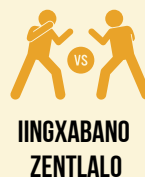
UTSHINTSHO JIKELELE LWEMOZULU KUFANELE UKUBA IBE YINKQUBO YENDALO EYENZEKAYO NGAPHAYA KWEMINYAKA EZIZIGIDI.



...kodwa ngoku imozulu itshintsha ngesantya esiyingozi. Lento ibangelwa kukutshiswa kwe gesi namalahle, ecaleni nezenzo ezifana nokugawulwa kwamahlathi kwakunye nokutyala izityalo ezinzulu kunye nezilimo lwezilwanyana zizo onobangela lokuba ilizwe libeshushuekhokhela ekubeni kubekho ingxaki yemozulu.



**UTSHINTSHO
LWEMOZULU
AYIKO KUTSHISA
KODWA, NAYO
ITHETHA UKUBA:**



Utshintsho lwemo luchaphazela yone into kwaye nawo wonke umntu, ingakumbi abantu abahleli behlala endlaleni, kwindawo apho lukho kakhulu utshintsho lwesimo sezulu nje ngendawo efana noMzantsi Afrika. Ezi ziphumo ziza kuba mbi xa sinongathathi ngqalelo.

Ndwendwela U africanclimatealliance.org ukuze uzibandakanye.